



iFleetcam
SMART FLEET SECURITY



Cloud Based Camera Security for Vehicles

 **pointguard**

Added Value for your Taxi Business

Security for both drivers and passengers...

Mobile camera surveillance has today become a standard component to guarantee a safe working environment for the driver. Different studies from companies that have installed security systems show that the cameras have had a strong preventive effect on the occurrence of violence and abuse towards the drivers. At the same time security cameras make passengers feel safe, also when taking a cab at late hours.

Since 2001 Pointguard has been a key player and leading distributor of mobile video surveillance systems for the taxi industry in Scandinavia. The iFleetcam system is a professional, mobile security system with live connection to the cloud, designed specifically with reliability, functionality and ease of use in mind. The iFleetcam system supports up to eight camera units, HD resolution, stills and/or video with sound. The hardware is the latest version based on several generations of vehicle cameras and 15 years of R&D and development and is built in an ISO 9000:2008 certified factory.



CLOUD CONNECTED

The iFleetcam is connected to the cloud using a built in 3G modem.



BUILT IN GPS

The built in GPS allows you to track your fleet and photos are geotagged



DRIVER BEHAVIOUR

Using built-in sensors the iFleetcam can also provide driver behaviour analysis



CLEAR NIGHT VISION

Thanks to its IR-diodes the iFleetcam provides good image and video quality also in low-light conditions



3G CONNECTION

Stable and fast connection thanks to dual band 3G coverage



1080P FULL HD

The image and video quality of the iFleetcam is excellent with 1080P Full HD quality



WEB PORTAL

You can manage your fleet, download videos and photos through the secure web portal



REMOTE CHECKUP

The system can be used for remote checkups, so now you don't need to call in the vehicles to do regular checkups

System overview

The heart of the iFleetcam system is the main unit, which takes care of the communication with cloud service. Depending on model, one to eight cameras can be connected, and also gps, panic button and triggers from the car.



Continuous or event based recording

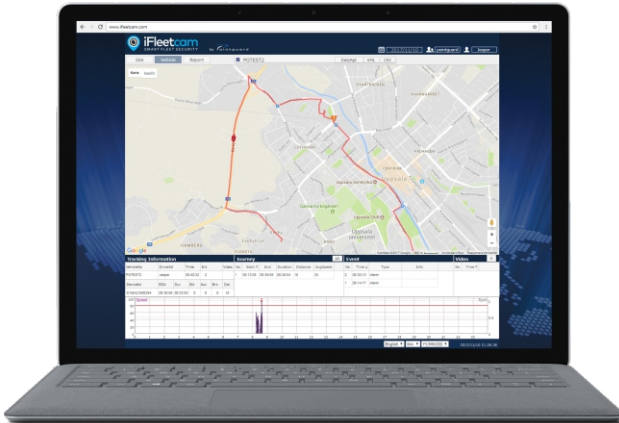
The iFleetcam supports 1080P Full HD video that can either be recorded continuously or upon events. The built-in 3-axis G-sensor can detect events like firm braking and emergency situations like crashes. Other events can be triggered by the panic button or by triggers from the car, e.g. by the interior light. Image snapshots are uploaded automatically to the cloud service on events and full resolution video can be downloaded on demand.

Sound recording is available using the built-in omni-directional microphone, but is optional. Although video recording is standard, the iFleetcam firmware can be adapted to only support still images if local regulations require so. Video and images are stored securely on the SD card in a propriety format which requires a special, password protected, software to be viewed.

Intuitive PC Software

The iFleetcam comes with an intuitive and easy to use PC software that allows you to search, playback, analyze and save videos. It is easy to install and supports all common Windows platforms (Win 7, 8, 10). With this software you can read the image/video data from the camera and important meta-data is overlaid automatically. You can then export images / movies to standard formats for easy processing by insurance companies or police. If you have more than one camera the software can show all cameras time-synced side by side and can also export video from all cameras as one mp4 file.





Get an overview of your fleet

Onboard the iFleetcam is a high precision GPS module that allows the images to be tagged with geodata. It also gives the system fleet tracking possibilities which not only shows the current position of all vehicles, but also stores historic data of routes and events for later access. The iFleetcam cloud system and PC software are both integrated with Google Maps to make sure that map data is always up to date. Export to Google Earth is also possible with just one click.

Remote Check-ups and configuration

With the iFleetcam system you no longer have to call in your vehicles to do regular check-ups of the surveillance system. The iFleetcam instead allows remote check-ups to ensure that the system is working properly. Scheduled check-ups can be performed by the client itself, or can be bought as a service from Pointguard. The system can also easily be reconfigured over the air.



Not only for internal security

The multi-camera support of the iFleetcam system makes it ideal not only for keeping track of what happens inside the vehicle, but also around it. Several of the camera units are ideal as dash cameras that will provide unbearable proof in case of an accident. The iFleet 4000/8000 also have support for an external monitor, which makes them ideal for use as an extra rearview system.

Stand-alone alternative

Although the iFleetcam primarily is a cloud based system, it can also be used stand-alone. Photos or video are then stored on the built-in SD card. If you only need basic camera security, this is the cheapest way to go, but you lose out on the vehicle tracking possibilities. It also means that the vehicle has to come in if you want to get video / images. To avoid the risk of losing the video / images in the event of theft the iFleet 4000 and 8000 main units usually are mounted in a hidden place.

Add even more security

As mentioned the videos / images are stored on the SD card in a secure proprietary format for security reasons. An extra physical layer of security can be added to your iFleetcam installation by mounting the main unit in a lockable steel housing (available as an optional accessory) that makes accessing the SD card almost impossible without having the right key.



iFleetcam main units and integrated cameras

The iFleetcam range offers 4 main units. The iFleet 1000 and 2000 are cameras with integrated main units, where the iFleet 2000 also supports one extra camera unit. The iFleet 4000 is our most popular unit for the taxi business, due to its extreme compact size and support for up to four different camera units. The iFleet 8000 is an extremely competent multi camera DVR aimed towards busses and other large vehicles that require large number of cameras. All four main units feature 3G connectivity and GPS and are compatible with the iFleetcam cloud service.



iFleet 1000

Compact 3G dashcam
Available with night vision (iFleet 100NV)



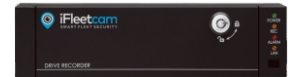
iFleet 2000

3G dashcam with support for one additional camera



iFleet 4000

Compact 3G unit with support for up to 4 cameras



iFleet 8000

Advanced 3G/LTE multi camera unit with support for up to 8 cameras

iFleetcam cameras

Apart from the iFleet 1000 and iFleet 2000 main units with integrated cameras Pointguard offers a number of external cameras that can be used with the iFleet 2000/4000/8000 main units.



iFleetcam 100

Very small 12V camera
100° lens
WDH: 31x33.5x25 mm



iFleetcam 200

Very small indoor camera
5 or 12V, 90° or 145° lens
Optional night vision



iFleetcam 300

Waterproof outdoor camera
12V, 120° lens
Optional night vision
WDH: 63.5x40.5x57.7 mm



iFleetcam 400

Waterproof outdoor camera
5V or 12V, 120° lens
Optional night vision
WDH: 59.2x56x62.1 mm



iFleetcam 500

Waterproof outdoor camera
12-48V, 120° or 145° lens
Optional night vision
WDH: 40.4x44.3x51 mm



iFleetcam 600

Compact indoor camera
5V, 120° lens
Optional night vision
WDH: 80.5x50.5x61 mm



iFleetcam 700

Very small outdoor camera
12V, 120° lens
Optional night vision
WDH: 68.5x59.7x42.6 mm



iFleetcam 800

Indoor dome camera
12V, 120° or 145° lens
Optional night vision
Ø80x60mm

Other Products from Pointguard:



iToplights



Toplights



Advertising Signs



School Signs



Driving School Signs



Customized Signs



Security Camera Systems



Airport Pickup Display



Taxi Butler Booking

 **ointguard**

**Pointguard AB
Ekebyvägen 10
SE-752 63 Uppsala
SWEDEN**

**Phone: +46 18 51 20 20
E-mail: info@pointguard.se
Web: www.pointguard.se
Facebook: www.facebook.com/pointguard.se**